

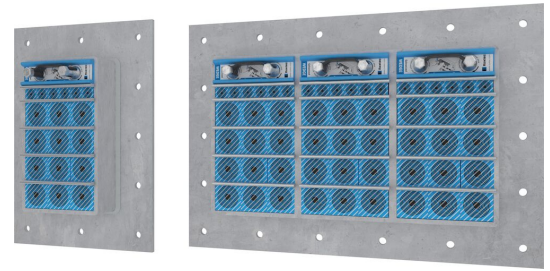


Roxtec GHM EMC transit for cabinets

Transit for EMC and high cable density.

The Roxtec GHM EMC is a light-weight cable entry seal for electromagnetic compatibility. The transit frame is attached by bolting and includes a sealing strip to seal against the structure and a conductive gasket for EMC performance. It is available in different materials and in a single or various combinations of openings. There is a choice between Roxtec ES modules for electromagnetic shielding and PE modules that protect against conducted disturbances. The modules adapt to cables and pipes of different sizes, and can be used to build in spare capacity in the transit. Roxtec EC (electrical continuity) test sticks are available to help indicate the electrical performance of the transit installation.

- Rodent resistant
- Area efficient



Product characteristics



Fire rated



IP/UL NEMA



EMI protection

Structure of installation



Cabinets & enclosures



Metal

Mounting type



Bolting

Ratings & certificates

Fire

- A-CLASS according to IMO 2010 FTP Code

Tightness

- IP 66/67

Supports

- Electromagnetic shielding
- Potential equalization

Frame dimensions

in/lbs

The frame variants below are a limited selection. For the full range of frames and configurations, please visit [roxtec.com](https://www.roxtec.com).

Product	Frame openings	Packing space	External dimensions WxHxD	Aperture dimensions w x h	Weight	Art. no
GHM 6x1 GALV INCL TSL 15x6	1	4.724 x 7.087	9.941 x 13.78 x 2.362	5.807(+0.197/-0.197) x 9.646(+0.197/-0.197)	10	5GHM000004089
GHM 6x2 GALV INCL TSL 15x6	2	4.724 x 7.087	15.079 x 13.78 x 2.362	10.945(+0.197/-0.197) x 9.646(+0.197/-0.197)	17	5GHM000006300
GHM 6x3 GALV INCL TSL 15x6	3	4.724 x 7.087	20.217 x 13.78 x 2.362	16.083(+0.197/-0.197) x 9.646(+0.197/-0.197)	23.2	5GHM000004091
GHM 6x1 PRIMED INCL TSL 15x6	1	4.724 x 7.087	9.941 x 13.78 x 2.362	5.807(+0.197/-0.197) x 9.646(+0.197/-0.197)	10.8	GHM6000000112
GHM 6x2 PRIMED INCL TSL 15x6	2	4.724 x 7.087	15.079 x 13.78 x 2.362	10.945(+0.197/-0.197) x 9.646(+0.197/-0.197)	16.3	GHM6000000212
GHM 6x3 PRIMED INCL TSL 15x6	3	4.724 x 7.087	20.217 x 13.78 x 2.362	16.083(+0.197/-0.197) x 9.646(+0.197/-0.197)	21.9	GHM6000000312
GHM 6x1 AISI316 INCL TSL 15x6	1	4.724 x 7.087	9.941 x 13.78 x 2.362	5.807(+0.197/-0.197) x 9.646(+0.197/-0.197)	10.8	5GHM000004746
GHM 6x2 AISI316 INCL TSL 15x6	2	4.724 x 7.087	15.079 x 13.78 x 2.362	10.945(-0.079) x 9.646	16.3	5GHM000004027
GHM 6x3 AISI 316 INCL TSL 15x6	3	4.724 x 7.087	20.217 x 13.78 x 2.362	16.083(+0.197/-0.197) x 9.646(+0.197/-0.197)	21.9	5GHM000004044



Sealing components

Sealing components



RM ES module with Multidiameter™



Lubricant



Wedge & Wedgekit ES



RM ES solid compensation module



RM PE module with Multidiameter™

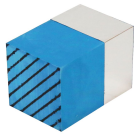
Accessories



Accessories ES and BG



Holder tools



RM PE solid compensation module



Wedge & Wedgekit



Stayplate



ES sealing kit

For detailed information, please visit [roxtec.com](https://www.roxtec.com).

The product information provided by Roxtec does not release the purchaser of the Roxtec system, or part thereof, from the obligation to independently determine the suitability of the products for the intended process, installation and/or use.

Roxtec gives no guarantee for the Roxtec system or any part thereof and assumes no liability for any loss or damage whatsoever, whether direct, indirect, consequential, loss of profit or otherwise, occurred or caused by the Roxtec systems or installations containing components not manufactured by an authorized manufacturer and/or occurred or caused by the use of the Roxtec system in a manner or for an application other than for which the Roxtec system was designed or intended.

Roxtec expressly excludes any implied warranties of merchantability and fitness for a particular purpose and all other express or implied representations and warranties provided by statute or common law. User determines suitability of the Roxtec system for intended use and assumes all risk and liability in connection therewith. In no event shall Roxtec be liable for indirect, consequential, punitive, special, exemplary or incidental damages or losses.

The Roxtec products are offered and sold in accordance with the conditions of the Roxtec General Terms of Sales. The latest version of the Roxtec General Terms of Sales can be downloaded from <https://www.roxtec.com/en/about-us/about-roxtec/general-terms-of-sales/>

We reserve the right to make changes to the product and technical information without further notice. Any errors in print or entry are no claims for indemnity. The content of this publication is the property of Roxtec International AB and is protected by copyright.

This document was generated on: 2024-04-27